

## PHLEBOTOMIST

C

\$30,700

Draw blood for tests, transfusions, research, or blood donations. Some explain their work to patients and provide assistance when patients have adverse reactions after their blood is drawn.



## MEDICAL LABORATORY TECHNICIAN

A

\$39,000

Perform general lab tests to help with diagnosis and treatment decisions.



**Ms. Xavier Harden, BS**  
Health Career Programs Specialist  
Xavier.harden@kctcs.edu  
859-815-7784

**Juliana McGuinn, MPA**  
Center Director  
Juliana.mcguinn@kctcs.edu  
859-442-1109

C

Certificate: 0-1 yr

A

Associates: 2 yrs

B

Bachelors: 4 yrs

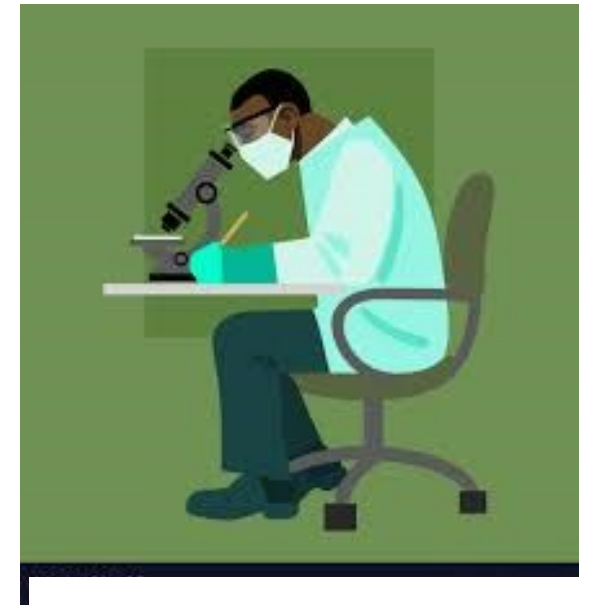
M

Masters: 6 yrs

D

Doctorate: 8 yrs

# CLINICAL LABORATORY CLUSTER



North Central KY Area Health Education Center

500 Technology Way  
Florence, Kentucky 41042

Designed and created by North Central KY AHEC



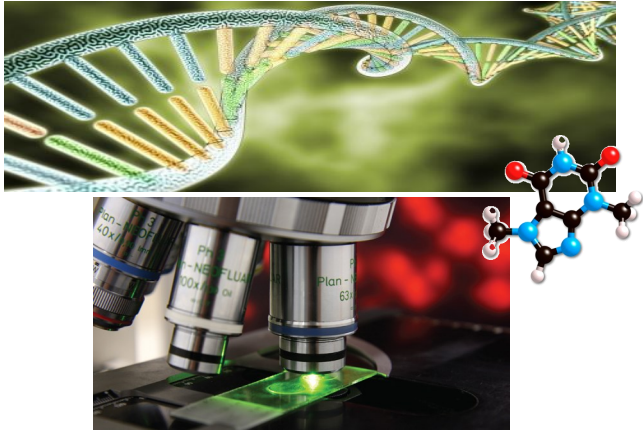
WWW.NORTHCENTRALKYAHEC.ORG

## GENETIC COUNSELOR

M

\$65,800

Advise patients or relatives at risk of an inherited disorder about the consequences of the disorder, the probability of developing or transmitting it, and the options open to them in management and family planning.



## LABORATORY MANAGER

M

\$85,000

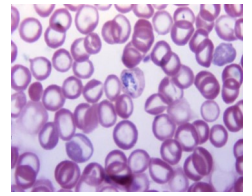
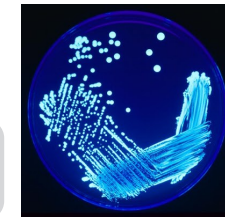
Plan, direct, and coordinate medical and health services. They might manage an entire facility, a specific clinical area or department, or a medical practice for a group of physicians. Must direct changes that conform to changes in healthcare laws, regulations, and technology.

## MEDICAL LABORATORY SCIENTIST

B M

\$54,000-\$75,000

Perform routine and complex lab tests to help with diagnosis and treatments. Areas of specialty include: Cytotechnologist, Histotechnologist, Blood Bank, Chemistry, Molecular, Immunology, and Microbiology.

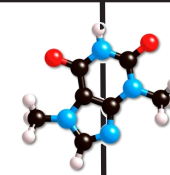
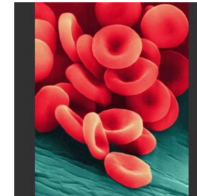


## HEMATOLOGIST

D

\$315,000

Diagnosis and treatment of blood disorders and malignancies.



## PATHOLOGIST

D

\$230,000

Examines tissues, interprets lab results, and performs autopsies.



Intensively trained allied health professional who provides anatomic pathology services under the direction and supervision of a licensed pathologist.

## PATHOLOGY ASSISTANT

M

\$90,000

